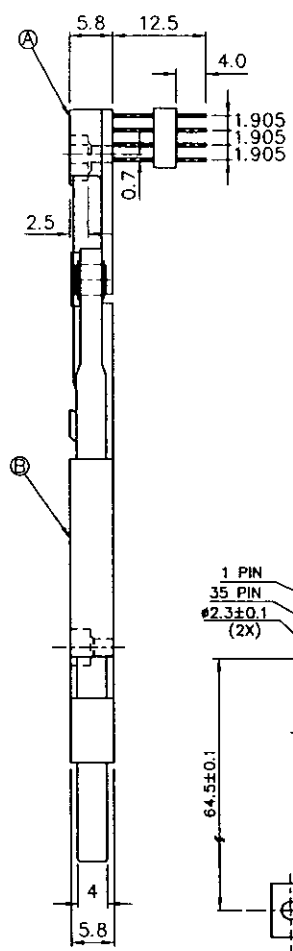
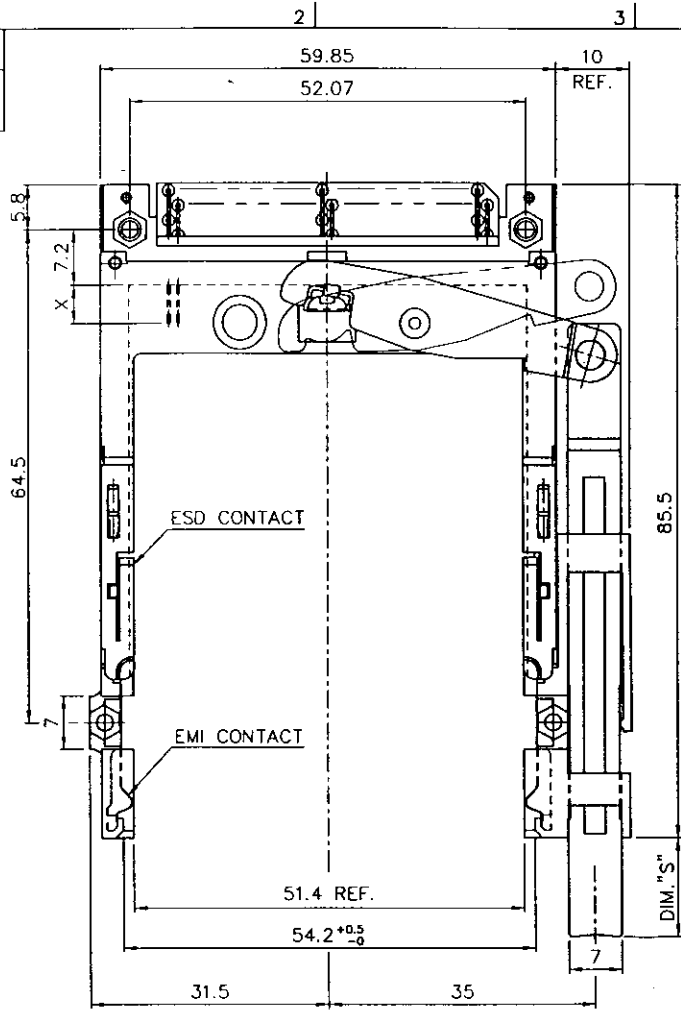


Tous droits strictement réservés. Reproduction ou communication à des tiers sans autorisation écrite du propriétaire.
 BERG ELECTRONICS
 Copyright © BERG ELECTRONICS

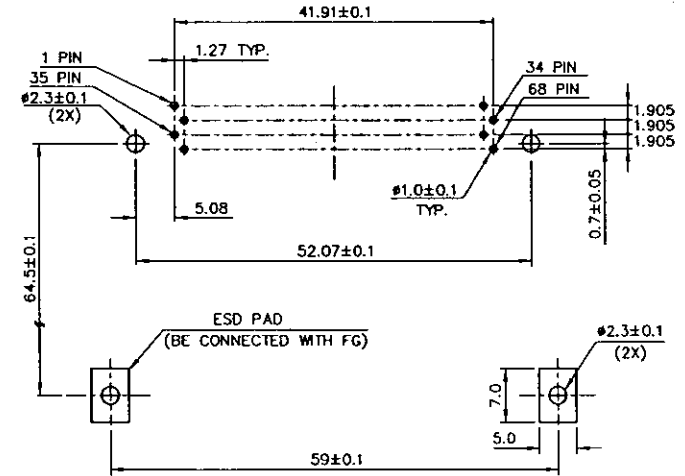
All rights strictly reserved. Reproduction or issue to third parties in any form without written authority from the proprietor.
 BERG ELECTRONICS
 Copyright © BERG ELECTRONICS

PRODUCT NO.
 88623-000**
 SEE TABLE I



- NOTES:
- EJECT FORCE : 3.5 Kg MAX.
 - EJECT TRAVEL: 8.0mm
 - MATERIAL
 - PART Ⓐ (HEADER ASS'Y)
 PLASTIC : HOUSING ...LCP UL94V-0 BLACK
 PIN : PHOSPHOR BRONZE
 - PART Ⓑ (EJECT MECHANISM ASS'Y)
 PLASTIC : GUIDE: POLYPHTHARAMID UL94V-0 BLACK
 PUSH ROD: POLYPHTHARAMID UL94V-0 BLACK
 PLATE : STAINLESS
 EMI CONTACT: PHOSPHOR BRONZE
 - FINISH (PIN) -
 UNDER PLATING : 0.5 μm MIN. Ni
 CONTACT AREA : 0.1 μm MIN. GOLD OVER 0.5 μm MIN. Pd-Ni
 SOLDER TAIL : 2.5 μm MIN. Sn-Pb
 - DIM "X"

4.25±0.1	3.5±0.1	5.0±0.1
OTHERS	36,67	1,17,34,35,51,68

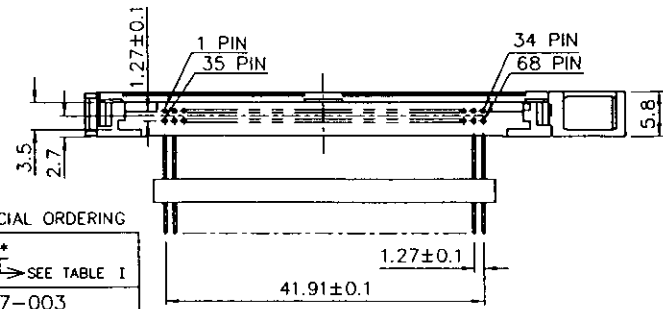


**	DIM"S"	PUSH ROD COLOR
AA	8.0	BLACK
AB	8.0	BLUE
AP	8.0	PURPLE
CA	13.0	BLACK
CB	13.0	BLUE
CP	13.0	PURPLE
FA	21.0	BLACK
FB	21.0	BLUE
FP	21.0	PURPLE

TABLE I

USE THE FOLLOWING P/N FOR OFFICIAL ORDERING

Ⓑ	EJECT MECH ASS'Y	92192-00** SEE TABLE I
Ⓐ	HDR ASS'Y	94337-003
DESCRIPTION	P/N	



4 CARD INSERTION DIRECTION

mat'l code		tolerance unless otherwise specified		CUSTOMER COPY		BERG ELECTRONICS	
rev.	ecn no.	dr	date	linear	±0.30	projection	title
A	T60009	WL	01/05/98	angles	±2°	⊕	68P EJECTOR HEADER ASS'Y TYPE 1/2/3
				dr	WENDY CHEN	11/02/95	unit
				enqr	JOSEPH HSIA	11/02/95	mm/inch
				chr	JOSEPH HSIA	11/02/95	scale
				oppd	JENN TSAO	11/02/95	1.5:1
sheet	revision	A		product family	code		
index	sheet	1		size	TWN		
				dwg no.	sheet		
				88623	1 OF 1		